

## FACT SHEET 2024/2025

### The University

Name	Technische Hochschule Lübeck
Erasmus Code	D LUBECK03
Website	<a href="http://www.th-luebeck.de">http://www.th-luebeck.de</a>
Address	Mönkhofer Weg 239 23562 Lübeck, Germany
Departments	<ul style="list-style-type: none"> <li>• Applied Natural Sciences</li> <li>• Architecture and Civil Engineering</li> <li>• Electrical Engineering and Computer Science</li> <li>• Mechanical Engineering and Business Administration</li> </ul>
About the university	We are an externally funded, technically oriented university in the north of Germany with about 33 bachelor and master degree courses in Technology, Natural Sciences, Economics and Architecture. Practically oriented, we prepare our more than 5,000 students on-site, online, and in dual studies programs for diverse fields of work. Our programs are developed according to the needs of the job market and the economy, and have a strong regional and practical aspect.

### The International Office

Website	<a href="https://www.th-luebeck.de/studium-und-weiterbildung/internationales-incoming/international-office-for-incomings/">https://www.th-luebeck.de/studium-und-weiterbildung/internationales-incoming/international-office-for-incomings/</a>
Contact details	<b>Head of International Office</b> Dr. Dagmar Diehl <b>Mobility Coordinators:</b> Kathrin Liebmann (Outgoing) Ulrike Reincke (Incoming & Outgoing) Contact: <a href="mailto:international@th-luebeck.de">international@th-luebeck.de</a>

### Academic Information

Academic calendar dates	<b>Fall semester</b> Welcome Weeks: 16. – 27.09.2024 Lecture period: 30.09.2024 – 24.01.2025 Examination period: 25.01.2025 – 04.02.2025 Christmas break: 23.12.2024 – 04.01.2025 <b>Spring semester</b> Welcome Days: March 2025 Lecture period: 24.03.2025 – 11.07.2025 Examination period: 12.07.2025 – 22.07.2025 Easter break: 18. – 25.04.2025
-------------------------	---

Application deadlines	Fall semester: 15 June Spring semester: 15 December
Application procedure	Students have to be nominated by their home university coordinator by email to <a href="mailto:international@th-luebeck.de">international@th-luebeck.de</a>  Nominated Students receive an email with required application documents (application form, Transcript of Records, Online Learning Agreement, Proof of language skills).
Regular course load	30 ECTS per semester
Grading system	1.0 / 1.3      Very good 1.7 / 2.0 / 2.3      Good 2.7 / 3.0 / 3.3      Satisfactory 3.7 / 4.0      Sufficient 5.0      Failed Failed exams may be repeated twice.

### Course offerings

Course offer	A list of courses in English for exchange students is available upon request.
Programs taught full or partially in English	<b>Bachelor:</b> International Studies of Mechanical Engineering International Studies of Engineering and Business Administration International Studies of Electrical Engineering Environmental Engineering Information Technology Computer Science International Business <b>Master:</b> Applied Information Technology Biomedical Engineering Mechanical Engineering Water Engineering
Language requirements	German: B1 (according to CEFR) English: B2 (according to CEFR)
German language courses	The language centre (Sprachenzentrum) at TH Lüneburg and the University of Lüneburg offers German as a Foreign language courses on level DaF I (A1) and DaF II (A2) as well as DaF Wissenschaftliches Schreiben. Courses are free of charge and students can earn up to 5 ECTS.

## Life Abroad

Housing	<p>The "Studentenwerk Schleswig-Holstein" offers modern rooms in student apartments where 3-4 students share kitchen and bathroom. These dormitories are located on the campus as well as in the city centre. Prices per room and month are range from 250 to 460 Euro. Applications shall be submitted as early as possible. Further information are available online at: <a href="https://studentenwerk.sh/en/wohnheime-luebeck">https://studentenwerk.sh/en/wohnheime-luebeck</a></p> <p>Students can also look for private accommodation. Recommended weblink is: <a href="https://www.wg-gesucht.de/en/">https://www.wg-gesucht.de/en/</a></p>
Cost of living	<p><b>Total living costs in Lübeck per month: approx. 900 - 1000 €</b>  room per month: approx. 250 - 550 €  Semester contribution: around 280 € per term (includes ticket for local public transportation valid during the semester; fee is subject to change)  Meal at cafeteria: 2.35 - 4.80 €  Broadcasting fee: 18.36 € per month</p>
Health insurance	Erasmus Exchange students have to bring the European Health Insurance Card.
Visa information for non-EU students	<p>Information for non-European Erasmus exchange students can be found on the Federal Office for Migration and Refugees (BAMF) website: <a href="https://www.bamf.de/EN/Themen/MigrationAufenthalt/ZuwandererDrittstaaten/MobilitaetEU/MobilitaetStudent/mobilitaet-student-node.html">https://www.bamf.de/EN/Themen/MigrationAufenthalt/ZuwandererDrittstaaten/MobilitaetEU/MobilitaetStudent/mobilitaet-student-node.html</a></p>
Activities for exchange students	<p>Sport: <a href="http://www.hochschulsport-luebeck.de/start.html">http://www.hochschulsport-luebeck.de/start.html</a>  Study Buddy Program: <a href="https://studentenwerk.sh/en/international-students">https://studentenwerk.sh/en/international-students</a>  Welcome Day(s)  Excursions and Events</p>



# STUDY ABROAD **STUDY IN LÜBECK**

[www.th-luebeck.de/incoming](http://www.th-luebeck.de/incoming)



**TECHNISCHE  
HOCHSCHULE  
LÜBECK**

# A NEW ADVENTURE

Once the heart of the Hanseatic League, Lübeck has retained its charm as a historic port city. Surrounded by water, it's home to a magical world of twisting alleys and beautiful courtyards. Discover its mix of historical sites, art and culture and relax along the water.

At Technische Hochschule Lübeck (TH Lübeck), we're happy to welcome young people from all over the world.

Our internationally renowned study programs and our industry contacts make TH Lübeck a great place to study.



# 1

*Practice-oriented  
education*

*All our professors at TH Lübeck have had experience working outside of academia in the private sector; they can support you with their hands-on experience during your studies and prepare you for a promising career.*



# THREE REASONS

WHY STUDYING AT  
TECHNISCHE HOCHSCHULE  
LÜBECK IS WORTHWHILE

*TH Lübeck is a small university –  
this means you'll study in small  
groups, with approachable  
lecturers and easy access to  
the resources you need.*



*Small groups,  
impressive education*



*An attractive city & region*

3.

*Lübeck has a lot to offer.  
The Baltic Sea is very close and  
you can choose from a wide range  
of cultural and sporting activities.  
What's more – Hamburg is less  
than an hour away.*

You need more reasons?  
Visit our website:

[www.th-luebeck.de/incoming](http://www.th-luebeck.de/incoming)



# WE SPEAK ENGLISH



Exchange students can choose from a variety of modules taught in English in these study areas:

- **Biomedical Engineering**
- **Business Administration**
- **Computer Science / Software Engineering**
- **Electrical Engineering**
- **Environmental Engineering**
- **Information Technology**
- **Mechanical Engineering**
- **Medical Microtechnology**
- **Sustainable Built Environments**
- **Water Engineering**

Details of the available course list are available online and at the International Office.



# GENERAL INFORMATION



TH Lübeck has signed cooperation agreements with over 50 universities around the world. In order to study for one or two semesters at TH Lübeck, students must be nominated by their home universities.

Please bear in mind that the **deadline** to apply is **June 15th** for programs starting in the winter semester and **December 15th** for summer semester programs.

In general, students need to submit the following documents:

- **Application form**
- **Transcript of Records**
- **Learning Agreement**
- **Proof of language skills, if applicable**
- **Copy of ID**

## GERMAN LANGUAGE COURSES

The Language Center at TH Lübeck offers German as a foreign language (DaF) courses at different levels. Courses are free of charge and students can earn credit points for successfully completing them.

## ACTIVITIES

Students can join a variety of courses offered by University Sports.

To meet other students, why not take part in our Welcome Weeks and in our trips organized throughout the semester.





## ACCOMMODATION

The Studentenwerk Schleswig-Holstein offers modern single rooms in student apartments of 3 to 4 people with shared bathroom and kitchen. These dormitories are located on campus as well as in the city center. Prices per room and month range from 251€ to 458 €.

Students can also seek accommodation in private student dormitories or shared flats.

## BUDGET AND TRANSPORTATION

Students should allocate a monthly budget of about 1,000 € depending on their life-style. A meal at the university cafeteria costs between 2.35 € and 4.80 €, for instance.

The semester fee (payable before enrollment at TH Lübeck) includes a pass for local and regional public transportation in Schleswig-Holstein and Hamburg that is valid for the whole semester.

An upgrade to a corresponding nationwide pass is available on payment of a monthly top-up.

## RESIDENCE PERMIT

EU nationals do not require a visa to stay in Germany. All other foreigners require a permit to reside in Germany and have to apply for a student visa at the appointed German embassy. Citizens of Australia, Canada, Israel, Japan, New Zealand, the Republic of Korea, the United Kingdom and the United States of America may obtain any required residence permit after entering Germany.

## HEALTH INSURANCE

A German health insurance policy is required for enrollment at TH Lübeck. EU students must bring their European Health Insurance Card, which is also accepted as sufficient proof of health insurance coverage. For Turkish exchange students, the Social Insurance Agreement document A/T-11 is also accepted.

## STAY IN TOUCH

If you would like to find out more about TH Lübeck, then why not follow us on Instagram and YouTube.

[www.th-luebeck.de/instagram](https://www.th-luebeck.de/instagram)

[www.th-luebeck.de/youtube](https://www.th-luebeck.de/youtube)

# ABOUT TH LÜBECK

TH Lübeck is a university of applied sciences – this type of university is a special feature in Germany. At these universities, education is particularly practice-oriented and focuses on subjects from technology, natural sciences, economics, architecture and design. Bachelor's and master's degrees awarded by universities of applied sciences are identical to those awarded by traditional universities. Only for Ph.D. degree studies do students have to transfer to a conventional university.

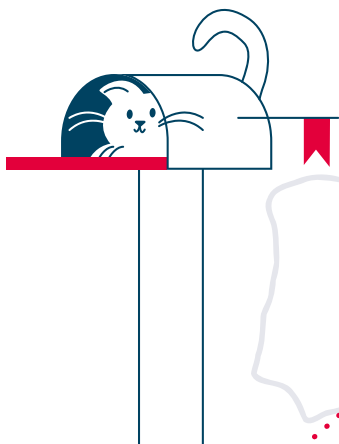


# SEE YOU SOON IN LÜBECK

## ARE YOU INTERESTED IN COMING TO TH LÜBECK?

Our International Office team is happy to assist you with any questions you may have and can provide you with detailed information on student life at TH Lübeck.

[international@th-luebeck.de](mailto:international@th-luebeck.de)  
[www.th-luebeck.de/incoming](http://www.th-luebeck.de/incoming)



**Courses taught in English for exchange students 2023/24**

Last Update: 12.10.2023

**Department of Applied Natural Sciences**

Course ID	Course title	Study Programme	level	semester	ECTS	remark
	Audiological Acoustics	Audiological Acoustics	B	Fall	2	available upon request
	<a href="#">Anatomy and Physiology</a>	Biomedical Engineering	M	Fall	4	
	<a href="#">Artificial Intelligence</a>	Biomedical Engineering	M	Fall	4	elective*
	<a href="#">Biomechanics</a>	Biomedical Engineering	M	Fall	2	
	<a href="#">Biophysics</a>	Biomedical Engineering	M	Fall	2	
	<a href="#">Design Methodology</a>	Biomedical Engineering	M	Fall	2	
	<a href="#">Design Methodology - Lab</a>	Biomedical Engineering	M	Fall	2	
	<a href="#">Material Science</a>	Biomedical Engineering	M	Fall	4	
	<a href="#">MatLab - Project</a>	Biomedical Engineering	m	Fall	4	
	<a href="#">Medical Electronics</a>	Biomedical Engineering	M	Fall	5	
	<a href="#">Medical Technology</a>	Biomedical Engineering	M	Fall	6	
	<a href="#">Medical Technology - Lab</a>	Biomedical Engineering	M	Fall	2	
	<a href="#">Microbiology and Hygiene</a>	Biomedical Engineering	M	Fall	4	
	<a href="#">Numerical Methods in Medicine</a>	Biomedical Engineering	M	Fall	3	
	<a href="#">Photonics</a>	Biomedical Engineering	M	Fall	3	
	<a href="#">Signal Processing</a>	Biomedical Engineering	M	Fall	2	
	<a href="#">Signal Processing - Lab</a>	Biomedical Engineering	M	Fall	2	
	<a href="#">Signals and Systems in Medical Imaging</a>	Biomedical Engineering	M	Fall	3	
	<a href="#">Medical Robotics</a>	Biomedical Engineering	M	Spring	4	elective*
	<a href="#">Biophysics Lab</a>	Biomedical Engineering	M	Spring	2	elective*
	<a href="#">Clinical Application - Project/excursion</a>	Biomedical Engineering	M	Spring	2	elective*
	<a href="#">Computer Aided Techniques in Design</a>	Biomedical Engineering	M	Spring	5	elective*
	<a href="#">Health Technology Assessment</a>	Biomedical Engineering	M	Spring	2	elective*
	<a href="#">Human Biochemistry - Lab</a>	Biomedical Engineering	M	Spring	4	elective*
	<a href="#">Computer Vision</a>	Biomedical Engineering	M	Spring	4	elective*
	<a href="#">Nuclear Imaging</a>	Biomedical Engineering	M	Spring	3	elective*
	<a href="#">Image Processing</a>	Biomedical Engineering	M	Spring	3	
	<a href="#">Imaging</a>	Biomedical Engineering	M	Spring	3	
	<a href="#">Implantable Hearing Devices</a>	Biomedical Engineering	M	Spring	3	elective*
	<a href="#">Innovation Management and Marketing</a>	Biomedical Engineering	M	Spring	2	elective*
	<a href="#">Medical Electronics - Project</a>	Biomedical Engineering	M	Spring	2	
	<a href="#">Medical Technology - Selected Topics</a>	Biomedical Engineering	M	Spring	4	elective*
	<a href="#">Numerical Methods - Lab</a>	Biomedical Engineering	M	Spring	2	
	<a href="#">Photonics II</a>	Biomedical Engineering	M	Spring	4	elective*
	<a href="#">Quality Management in Healthcare</a>	Biomedical Engineering	M	Spring	2	elective*
	<a href="#">Regulatory Affairs (online)</a>	Biomedical Engineering	M	Spring	2	
	<a href="#">Scientific Writing</a>	Biomedical Engineering	M	Spring	2	
	<a href="#">Specialized Biomechanics</a>	Biomedical Engineering	M	Spring	2	elective*
	<a href="#">Successful Negotiation and Communication</a>	Biomedical Engineering	M	Spring	2	elective*
	<a href="#">Anaesthesia</a>	Biomedical Engineering	M	Spring	3	elective*
	Ecology	Environmental Engineering	B	Fall	2.5	elective*
	Environmental Chemistry	Environmental Engineering	B	Fall	5	
	Environmental Process Engineering	Environmental Engineering	B	Fall	7.5	4 hours lecture and 2 hours lab work
	Hygiene	Environmental Engineering	B	Fall	2.5	elective*
	Toxicology	Environmental Engineering	B	Fall	2.5	elective*
	Circular Economy and Resource Management	Environmental Engineering	B	Fall	5	
	Waste Water Processes	Environmental Engineering	B	Fall	5	

	Air Pollution Control	Environmental Engineering	B	Spring	5	3 hours lecture and 1 hours lab work
	Control Systems	Environmental Engineering	B	Spring	5	elective*
	Design Methodology	Environmental Engineering	B		2.5	
	Environmental Microbiology	Environmental Engineering	B	Spring	2.5	
	Innovation Management and Marketing	Environmental Engineering	B		2.5	elective*
	Renewable Energies	Environmental Engineering	B	Spring	5	3 hours lecture and 1 hours lab work
	Sensors	Environmental Engineering	B	Spring	2.5	elective* - not decided yet if offered in fall or spring
	Water Chemistry and Water Analysis	Environmental Engineering	B	Spring	5	2 hours lecture and 2 hours lab work
	Energy Conversion and Power Plants	Environmental Engineering	B		2.5	elective*
	Energy Economics	Environmental Engineering	B		2.5	elective*
	Environmental Engineering Management	Environmental Engineering	B		2.5	elective*
	Fundamentals of Environmental Biochemistry	Environmental Engineering	B	Spring	2.5	
	X-Ray Technology	Environmental Engineering	B		2.5	elective*



Department of Architecture and Civil Engineering

Course ID	Course title	Study Programme	level	semester	ECTS	remark
	Graphic Information Systems	Urban Planning	B	Spring	5	
BB 2220	Engineering Hydrology	Civil Engineering	B	Spring	5	
WEM1110	<a href="#">Higher Mathematics, Data Science</a>	Water Engineering	M	Fall	3	
WEM1120	<a href="#">Research Methods</a>	Water Engineering	M	Fall	3	
WEM1130	<a href="#">Water Regulation</a>	Water Engineering	M	Fall	3	
WEM1140	<a href="#">Advanced Waste Water Treatment</a>	Water Engineering	M	Fall	3	
WEM1150	<a href="#">Urban Water Protection</a>	Water Engineering	M	Fall	6	
WEM1160	<a href="#">Hydraulic Engineering</a>	Water Engineering	M	Fall	6	
WEM1170	<a href="#">Simulation and Modeling I</a>	Water Engineering	M	Fall	6	
WEM1210	<a href="#">Geographic Information Systems</a>	Water Engineering	M	Spring	6	
WEM1220	<a href="#">Applied Freshwater Ecology</a>	Water Engineering	M	Spring	6	
WEM1230	<a href="#">Sustainable Urban Systems</a>	Water Engineering	M	Spring	6	
WEM1240	<a href="#">Hydrological Engineering</a>	Water Engineering	M	Spring	6	
WEM1250	<a href="#">Simulation and Modeling II</a>	Water Engineering	M	Spring	6	

Department of Electrical Engineering and Computer Science

Course ID	Course title	Study Programme	level	semester	ECTS	remark
	<a href="#">Analog Electronics II</a>	ISE Electrical Engineering	B	Fall	5	
	<a href="#">Control System Basics</a>	ISE Electrical Engineering	B	Fall	5	
	<a href="#">Humanities I</a>	ISE Electrical Engineering	B	Fall	5	
	<a href="#">Communication Engineering</a>	ISE Electrical Engineering	B	Fall	5	
	<a href="#">Radio Frequencies</a>	ISE Electrical Engineering	B	Fall	5	
	<a href="#">Signals and Systems</a>	ISE Electrical Engineering	B	Fall	5	
	<a href="#">German language and culture I</a>	ISE Electrical Engineering	B	Fall	5	
	<a href="#">Computer Aided Design</a>	ISE Electrical Engineering	B	Spring	5	
	<a href="#">Digital Control Systems</a>	ISE Electrical Engineering	B	Spring	5	
	<a href="#">Humanities II</a>	ISE Electrical Engineering	B	Spring	5	
	<a href="#">Microwaves</a>	ISE Electrical Engineering	B	Spring	5	
	<a href="#">Communication Networks</a>	ISE Electrical Engineering	B	Spring	5	
	<a href="#">Renewable Energy</a>	ISE Electrical Engineering	B	Spring	5	
	<a href="#">German language and culture II</a>	ISE Electrical Engineering	B	Spring	5	prerequisite: GLC I
	<a href="#">Information Systems</a>	Information Technology	B	Fall	5	
	<a href="#">Principles of Compilers</a>	Information Technology	B	Fall	5	
	<a href="#">Software Engineering II</a>	Information Technology	B	Spring	5	
	<a href="#">Computer Networks</a>	Information Technology	B	Spring	5	
	<a href="#">Distributed Systems</a>	Information Technology	B	Spring	5	
	<a href="#">Digital Signal Processing</a>	Information Technology	B		5	elective*
	<a href="#">Artificial Intelligent Systems</a>	Information Technology	B		5	elective*
	<a href="#">Automation Systems - Industrial Robots</a>	Information Technology	B		5	elective*
	<a href="#">Automation Systems - PLC-Systems</a>	Information Technology	B	Spring	5	elective*
	<a href="#">Project Management</a>	Information Technology	B		5	elective*
	<a href="#">Human Machine Interaction</a>	Information Technology	B		5	elective*
	<a href="#">Interactive Virtual Worlds</a>	Information Technology	B		5	elective*
	<a href="#">Special Topic of Automation Systems</a>	Information Technology	B		5	elective*
	<a href="#">Special Topic of Computer Science</a>	Information Technology	B		5	elective*
	<a href="#">Special Topic of Electrical Engineering</a>	Information Technology	B		5	elective*
	<a href="#">Internet Programming</a>	Information Technology	B		5	elective*
	<a href="#">Network Security</a>	Information Technology	B		5	elective*
	Softwareverification	Computer Science	B	Fall	5	English online course 4h/week
	Computer Networks	Computer Science	B	Fall	5	starting 24/25
	Cooperative Systems and Social Media	Computer Science	B	Fall	5	
	AI Applications	Cross-curricular	B	Fall	2,5/5	online
	Advanced Machine Vision	Computer Science	B	Fall	5	
	Interactive Virtual Worlds	Computer Science / Information Technology & Design	B	Fall	5	online
	Theory of Computing	Computer Science	B	Spring	5	English MOOC / Videos / English tutorials on demand
	Software and Web Engineering II	Computer Science	B	Spring	5	
	Theoretical Computer Science	Computer Science	B	Spring	5	
	Software Architecture	Computer Science	B	Spring	5	
	Data Management	Computer Science	B	Spring	5	
	Usability / User Experience Design [Human-Computer Interaction]	Computer Science	B	Spring	5	
	Software Engineering Project	Computer Science	B	Spring	10	
	<a href="#">Scientific Project</a>	Applied Information Technology	M	Fall	10	
	<a href="#">Digital Processing of Stochastic Signals</a>	Applied Information Technology	M	Fall	5	elective*
	<a href="#">Process Integration</a>	Applied Information Technology	M	Fall	5	elective*
	<a href="#">Autonomous Vehicles</a>	Applied Information Technology	M	Fall	5	elective*
	<a href="#">Process Optimization</a>	Applied Information Technology	M	Fall	5	elective*

<a href="#">Applied FPGA and VLSI Design</a>	Applied Information Technology	M	Fall	5	elective*
<a href="#">Wireless Network for Cyber Physical Systems</a>	Applied Information Technology	M	Fall	5	elective*
<a href="#">Supply Chain Management</a>	Applied Information Technology	M	Fall	5	elective*
<a href="#">Wireless Localization</a>	Applied Information Technology	M	Spring	5	elective*
<a href="#">Business Process Management</a>	Applied Information Technology	M	Spring	5	elective*
<a href="#">Analog Integrated Circuits</a>	Applied Information Technology	M	Spring	5	elective*
<a href="#">Secure Programming</a>	Applied Information Technology / Computer Science/SEDS	M	Fall	5	elective*
<a href="#">Real-Time Systems</a>	Applied Information Technology / Computer Science/SEDS	M	Fall	5	elective*
<a href="#">Mobile Applications</a>	Applied Information Technology / Computer Science/SEDS	M	Fall	5	elective*
<a href="#">Human-Computer Interfaces</a>	Applied Information Technology / Computer Science/SEDS	M	Fall	5	elective*
<a href="#">Scientific Project I</a>	Computer Science/Software Engineering for Distributed Systems	M	Spring	5	offered in German/English -> ask lecturer on demand
<a href="#">Cloud-native Architectures</a>	Computer Science/Software Engineering for Distributed Systems	M	Spring	5	offered in German/English -> ask lecturer on demand
<a href="#">Special Topics in Distributed Systems I</a>	Computer Science/Software Engineering for Distributed Systems	M	Spring	5	elective*, offered in German/English -> ask lecturer on demand
<a href="#">Hardware-based IT-Security</a>	Computer Science/Software Engineering for Distributed Systems	M	Fall	5	elective*
<a href="#">Cloud-native Programming</a>	Computer Science/Software Engineering for Distributed Systems	M	Fall	5	offered in German/English -> ask lecturer on demand
<a href="#">Scientific Project II</a>	Computer Science/Software Engineering for Distributed Systems	M	Fall	5	offered in German/English -> ask lecturer on demand
<a href="#">Seminar Distributed Systems</a>	Computer Science/Software Engineering for Distributed Systems	M	Fall	5	offered in German/English -> ask lecturer on demand
<a href="#">Special Topics in Distributed Systems II</a>	Computer Science/Software Engineering for Distributed Systems	M	Fall	5	offered in German/English -> ask lecturer on demand

Department of Mechanical Engineering and Business Administration

Course ID	Course title	Study Programme	level	semester	ECTS	remark
N3B2400	<a href="#">Selected Topics in Information Technology</a>	International Business	B	Fall	5	
N3B2440	<a href="#">Management in the Global Economy</a>	International Business	B	Fall	5	= International Management
N3B2430	<a href="#">International Accounting and Law</a>	International Business	B	Fall	5	
N3B2410	<a href="#">Entrepreneurship</a>	International Business	B	Fall	5	
N3B2420	<a href="#">Advanced English Communication</a>	International Business	B	Fall	3	
N3B2500	<a href="#">International Markets</a>	International Business	B	Fall	5	
N3B2510	<a href="#">Corporate Finance</a>	International Business	B	Fall	5	
N3B2520	<a href="#">Marketing in the Global Economy</a>	International Business	B	Fall	5	
N3B2530	<a href="#">Supply Chain Management</a>	International Business	B	Fall	2	
N3B2490	<a href="#">Academic Writing and Research Seminar</a>	International Business	B	Fall	7	
	<a href="#">SoftSkills and Leadership II (Teamwork, Leadership, Conflict Mgt)</a>	International Business	B	Fall	5	
	<a href="#">SoftSkills and Leadership I (Communication, Self Mgt, Presentations)</a>	International Business	B	Spring	5	
N3B2450	<a href="#">Methods of Market Research</a>	International Business	B	Spring	5	
N3B2470	<a href="#">Management of Innovation</a>	International Business	B	Spring	2	
N3B2480	<a href="#">International Economic Policies</a>	International Business	B	Spring	5	
MB1810	<a href="#">Automatic Control Systems</a>	ISM Mechanical Engineering	B	Fall	4	
MB1840	<a href="#">Fluid Mechanics</a>	ISM Mechanical Engineering	B	Fall	4	
MB1830	<a href="#">Instrumentation/Measurement</a>	ISM Mechanical Engineering	B	Fall	4	
MB1940	<a href="#">Principles of Thermodynamics I</a>	ISM Mechanical Engineering	B	Fall	4	
MB1930	<a href="#">Intermediate Mechanics of Materials</a>	ISM Mechanical Engineering	B	Fall	4	
MB1910	<a href="#">Design of Machine Components</a>	ISM Mechanical Engineering	B	Fall	4	
MB1950	<a href="#">Project Management</a>	ISM Mechanical Engineering	B	Fall	2	
MB1820	<a href="#">Humanities I</a>	ISM Mechanical Engineering	B	Fall	4	
MB1970	<a href="#">Principles of Thermodynamics II</a>	ISM Mechanical Engineering	B	Spring	2	
MB1980	<a href="#">Product Development/ Engineering Design</a>	ISM Mechanical Engineering	B	Spring	4	
MB1850	<a href="#">Heat Transfer</a>	ISM Mechanical Engineering	B	Spring	4	
MB1870	<a href="#">Modelling and Numeral Analysis</a>	ISM Mechanical Engineering	B	Spring	4	
MB1880	<a href="#">Vibration Control</a>	ISM Mechanical Engineering	B	Spring	4	
MB1860	<a href="#">Humanities II</a>	ISM Mechanical Engineering	B	Spring	4	
MB2120	<a href="#">Selected Topics in Social Science</a>	ISM Mechanical Engineering	B	Spring	3	
MB1450	<a href="#">Professional Behaviour</a>	ISM Mechanical Engineering	B	Spring	3	
WB2010	<a href="#">International Management</a>	ISW Engineering and Business Management	B	Fall	5	= Mgmt in the Global Economy
WB2510	<a href="#">Project Management with Business Project</a>	ISW Engineering and Business Management	B	Fall	5	
WB2540	<a href="#">Operations Management</a>	ISW Engineering and Business Management	B	Fall	5	
WB2550	<a href="#">Planning of Technological Investments and Simulations</a>	ISW Engineering and Business Management	B	Fall	5	
WB2520	<a href="#">International Business Finance</a>	ISW Engineering and Business Management	B	Spring	5	
WB2530	<a href="#">Quantitative Methods in Business</a>	ISW Engineering and Business Management	B	Spring	5	
WB2560	<a href="#">Integrated Systems (SAP)</a>	ISW Engineering and Business Management	B	Spring	5	
WB2570	<a href="#">Materials Handling</a>	ISW Engineering and Business Management	B	Spring	5	
MM1520	<a href="#">Seminar 1: Current Research Topics</a>	Mechanical Engineering	M	Fall	5	only for students who write the Master thesis at THL
MM1220	<a href="#">Product Development in Production</a>	Mechanical Engineering	M	Fall	5	please check pre-requisites
MM1310	<a href="#">Simulation and Control</a>	Mechanical Engineering	M	Fall	5	elective*; **
MM1320	<a href="#">Composite Materials</a>	Mechanical Engineering	M	Fall	5	elective*
MM1340	<a href="#">Toolbox for Fluid Mechanical Design</a>	Mechanical Engineering	M	Fall	5	elective*, please check pre-requisites
MM1370	<a href="#">Polymer Science</a>	Mechanical Engineering	M	Fall	5	elective*, please check pre-requisites
MM1380	<a href="#">Prototyping &amp; Virtual Reality</a>	Mechanical Engineering	M	Fall	5	elective*
MM1390	<a href="#">Surface Engineering and Tribology</a>	Mechanical Engineering	M	Fall	5	elective*, please check pre-requisites
MM1350	<a href="#">Selected Topics in Mechatronics</a>	Mechanical Engineering	M	Fall	5	elective*, please check pre-requisites
MM1315	<a href="#">Biomechanics &amp; Biophysics</a>	Mechanical Engineering	M	Fall	5	elective*

MM1325	<a href="#">Medical Technology</a>	Mechanical Engineering	M	Fall	5	elective*
MM1335	<a href="#">Mechanics of Solids</a>	Mechanical Engineering	M	Fall	5	elective*
MM1410	<a href="#">Ethics</a>	Mechanical Engineering	M	Fall	5	elective*
MM1420	<a href="#">Product &amp; Business Plan</a>	Mechanical Engineering	M	Fall	5	elective*
MM1395	<a href="#">Data Science for Predictive Maintenance</a>	Mechanical Engineering	M	Fall	5	elective*
MM1385	<a href="#">Mobile Mechatronic Systems</a>	Mechanical Engineering	M	Fall	5	elective*
MM1130	<a href="#">Material Science</a>	Mechanical Engineering	M	Spring	5	please check pre-requisites, **
MM1210	<a href="#">Advanced Product Development</a>	Mechanical Engineering	M	Spring	5	please check pre-requisites
MM1620	<a href="#">Management &amp; Leadership</a>	Mechanical Engineering	M	Spring	5	
MM1230	<a href="#">Computer Aided Techniques in Design</a>	Mechanical Engineering	M	Spring	5	please check pre-requisites, **
MM1330	<a href="#">Advanced Material Testing</a>	Mechanical Engineering	M	Spring	5	please check pre-requisites, **
MM1110	<a href="#">Selected Topics of Finite Element Methods</a>	Mechanical Engineering	M	Spring	5	please check pre-requisites
MM1120	<a href="#">Selected Topics in Engineering Mathematics</a>	Mechanical Engineering	M	Spring/ Fall	5	please check pre-requisites
* please check which courses will be finally offered, places are limited						
** courses include a lab, places are limited						



Language Center

Course ID	Course title	Study Programme	level	semester	ECTS	remark
na	English Foundation Course	A2/B1	B/M	Spring/Fall	0	Registration required, space is limited
70550	Technical English for Civil Engineering & Achitecture	B1/B2	B/M	Spring/Fall	5	Registration required, space is limited
1210	Technical English I	B1/B2	B/M	Spring/Fall	5	Registration required, space is limited
1540	Effective English Communication for Science and Engineering	B2/C1	B/M	Spring/Fall	5	Registration required, space is limited
1240	Business English I	B2	B/M	Spring/Fall	5	Registration required, space is limited
1270	Business English II	B2/C1	B/M	Spring/Fall	5	Registration required, space is limited
na	English for International Certificates	B2/C1	B/M	Spring/Fall	0	Registration required, space is limited
div	German as a foreign language on various levels	A1.1 - C1.1	B/M	Spring/Fall	5	Registration required, space is limited
1460	German language at university level: Academic Language & Scientific Work	C1/C2	B/M	Spring/Fall	5	Registration required, space is limited
tba	Humanities I: Intercultural Communication		B/M	Spring/Fall	5	Registration required, space is limited