



Say

Yes

TO NEW

adventures

STUDY ABROAD,
STUDY IN LÜBECK



Jump into a new adventure

Once the heart of the Hanseatic League, the Hanseatic City of Lübeck has retained the charm of an original port city. Surrounded by water, it is home to a magical world of twisty alleys and beautiful courtyards. Lübeck welcomes visitors from all over the world with the motto „Concordia domi foris pax“ – harmony inside, peace outside.



At Technische Hochschule Lübeck, we are happy to welcome young people from all over the world. Our internationally renowned study programs and our industry contacts make TH Lübeck a great place to study.



3 reasons

... WHY STUDYING AT

TECHNISCHE HOCHSCHULE LÜBECK IS WORTHWHILE



1. PRACTICE-ORIENTED
EDUCATION

All professors at TH Lübeck have experience working outside of academia in the private sector, they can provide you with hands-on experience during your studies and prepare you for a promising career.



2. ATTRACTIVE CITY &
REGION



3. SMALL GROUPS,
BIG EDUCATION

TH Lübeck is a small university – that means, you'll study in small groups, your lecturers will quickly know every name and you'll always have easy access to the resources you need.

You need more reasons? Visit our website
www.th-luebeck.de/erasmus

We speak *English*

Exchange students can choose from a selection of programs taught in English:

- Applied Information Technology, M.Sc.
- Biomedical Engineering, M.Sc.
- Business Administration, B.Sc.
- Business Administration and Engineering, B.Sc.
- Computer Science / Software Engineering, M.Sc.
- Electrical Engineering, B.Sc.
- Environmental Engineering, B.Sc.
- Information Technology, B.Sc.
- Mechanical Engineering, B.Sc. and M.Sc.
- Medical Microtechnology, M.Sc.
- Water Engineering, M.Eng.



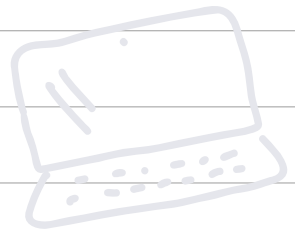
General *information*

Erasmus+

TH Lübeck has exchange agreements with over 30 European universities. In order to study abroad within the framework of ERASMUS+ program, you must apply through the international or Erasmus+ office of your home university. The nomination must be submitted by your home university via e-mail at: international@th-luebeck.de.

Please keep in mind: The registration deadline is June 15th for stays starting in the winter semester, and December 15th for stays starting in the summer semester. The following documents need to be submitted by the student:

- Application form
- Transcript of Records
- Learning Agreement
- Proof of language skills, if applicable
- Copy of ID





GERMAN LANGUAGE COURSES

The language center at TH Lübeck offers German as a foreign language (DaF) courses on different levels. Courses are free of charge and students can earn up to 5 ECTS upon successful completion.

ACCOMMODATION

The Studentenwerk Schleswig-Holstein offers modern rooms in student apartments where 3-4 students share kitchen and bathroom.

These dormitories are located on the campus as well as in the city centre.

Prices per room and month range from 233 to 428 €.

Students can also search independently for private accommodation.





Students should calculate a monthly budget of approx. 900 € depending on your personal life style. A meal at the university's cafeteria costs between 2.30 € and 4.50 €. Included in the semester fee (payable before enrollment at TH Lübeck) is a student transit pass for public transport in Schleswig-Holstein and Hamburg that is valid for the whole semester.

RESIDENCE PERMIT

Non-EU citizens entering from outside the EU have to apply for a residence permit in Germany. Students with a valid student visa for another EU member state are entitled to study in Germany without a German residence permit. It is mandatory to notify the Federal Office for Migration and Refugees before entering Lübeck. All other non-EU citizens have to apply for a student visa with the German embassy before entering Germany.



HEALTH INSURANCE

A German health insurance policy is required for enrollment at TH Lübeck. EU students must bring their European Health Insurance Card which is also accepted as sufficient proof of health insurance coverage. For Turkish exchange students, the Social Insurance Agreement document A/T-11 is also accepted.

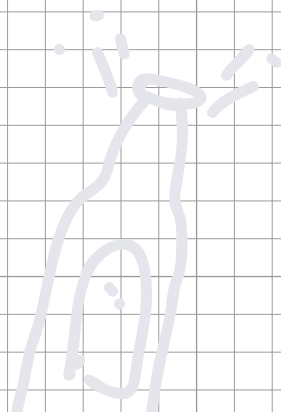
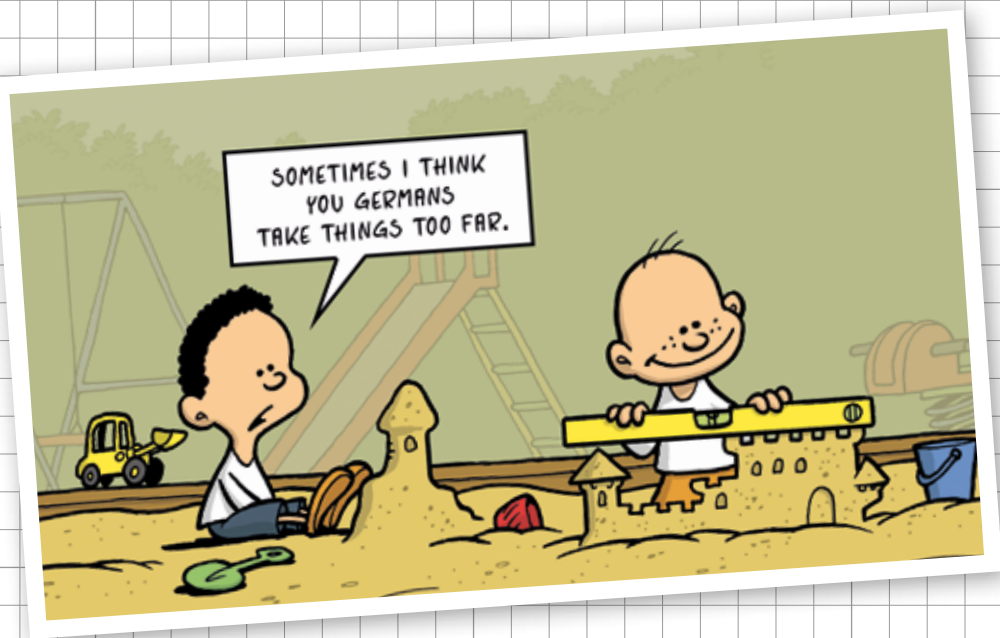
STAY IN CONTACT

We hope you enjoy your time at TH Lübeck. If you want to stay in touch with us, please follow us on LinkedIn, Facebook, Instagram, Twitter, Youtube.



MADE IN *Germany*

In some countries, people smile about the German penchant for order, punctuality and quality - we think that these values are still relevant today. However, it's still okay to laugh about it together.



How to *come to* TH Lübeck

Our International Office will help with any questions you may have – they gladly provide you with information on the application process, life in Germany in general and will help you to get in contact with other students.



Ulrike Reincke

International Office

Telefon: +49 451 300 - 5703

E-Mail: international@th-luebeck.de

CONTACT



Technische Hochschule Lübeck

Technische Hochschule Lübeck is a university of applied sciences – this is a special feature in Germany. At these universities, education is particularly practice-oriented and focuses on subjects from the fields of technology, natural sciences, economics, architecture and design. Bachelor's and master's degrees awarded by universities of applied sciences are identical to those awarded by traditional universities. Only for Ph.D. degree studies, students have to transfer to a conventional university.

See you soon in

≡ LÜBECK ≡



FACT SHEET 2023/2024

The University

Name	Technische Hochschule Lübeck
Erasmus Code	D LUBECK03
Website	http://www.th-luebeck.de
Address	Mönkhofer Weg 239 23562 Lübeck, Germany
Departments	<ul style="list-style-type: none"> • Applied Natural Sciences • Architecture and Civil Engineering • Electrical Engineering and Computer Science • Mechanical Engineering and Business Administration
About the university	We are an externally funded, technically oriented university in the north of Germany with about 33 bachelor and master degree courses in Technology, Natural Sciences, Economics and Architecture. Practically oriented, we prepare our more than 5,000 students on-site, online, and in dual studies programs for diverse fields of work. Our programs are developed according to the needs of the job market and the economy, and have a strong regional and practical aspect.

The International Office

Website	https://www.th-luebeck.de/en/studies/study-offer/international-studies/#tab-1 https://www.th-luebeck.de/international-students
Contact details	Head of International Office Dr. Dagmar Diehl Erasmus+ mobility coordinators: Kathrin Liebmann (Outgoing) Ulrike Reincke (Incoming & Outgoing) Contact: international@th-luebeck.de

Academic Information

Academic calendar dates	Fall semester Welcome Week: 11. – 22.09.2023 Lecture period: 25.09.2023 – 19.01.2024 Examination period: 20. – 30.01.2024 Christmas break: 23.12.2023 – 06.01.2024 Spring semester Welcome Days: March 2024 Lecture period: 25.03.2024 – 05.07.2024 Examination period: 06. – 18.07.2023
-------------------------	--

Application deadlines	Fall semester: 15 June Spring semester: 15 December
Application procedure	Students have to be nominated by their home university coordinator by email to international@th-luebeck.de Nominated Students receive an email with required application documents (application form, Transcript of Records, Learning Agreement, Proof of language skills).
Regular course load	30 ECTS per semester
Grading system	1.0 / 1.3 Very good 1.7 / 2.0 / 2.3 Good 2.7 / 3.0 / 3.3 Satisfactory 3.7 / 4.0 Sufficient 5.0 Failed Failed exams may be repeated twice.

Course offerings

Course offer	A list of courses in English for exchange students is available upon request.
Programs taught full or partially in English	Bachelor: International Studies of Mechanical Engineering International Studies of Engineering and Business Administration International Studies of Electrical Engineering Environmental Engineering Information Technology International Business Master: Applied Information Technology Biomedical Engineering Mechanical Engineering Water Engineering
Language requirements	German: B1 (according to CEFR) English: B2 (according to CEFR)
German language courses	The language centre (Sprachenzentrum) at TH Lübeck and the University of Lübeck offers German as a Foreign language courses on level DaF I (A1) and DaF II (A2) as well as DaF Wissenschaftliches Schreiben. Courses are free of charge and students can earn up to 5 ECTS.

Life Abroad

Housing	<p>The "Studentenwerk Schleswig-Holstein" offers modern rooms in student apartments where 3-4 students share kitchen and bathroom. These dormitories are located on the campus as well as in the city centre. Prices per room and month are range from 212 to 407 Euro. Applications shall be submitted as early as possible. Further information are available online at: https://studentenwerk.sh/en/wohnheime-luebeck</p> <p>Students can also look for private accommodation. Recommended weblinks are: https://www.wg-gesucht.de/en/</p>
Cost of living	<p>Total living costs in Lübeck per month: approx. 800 - 900 € room per month: approx. 200-400 € Semester contribution: around 280 € per term (includes ticket for local public transportation valid during the semester; fee is subject to change) Meal at cafeteria: 2.45 - 5.00 € Broadcasting fee: 18.36 € per month</p>
Health insurance	<p>Erasmus Exchange students have to bring the European Health Insurance Card.</p>
Visa information for non-EU students	<p>Information for non-European Erasmus exchange students can be found on the Federal Office for Migration and Refugees (BAMF) website: https://www.bamf.de/EN/Themen/MigrationAufenthalt/ZuwandererDrittstaaten/MobilitaetEU/MobilitaetStudent/mobilitaet-student-node.html</p>
Activities for the exchange students	<p>Sport: https://www.hochschulsport-luebeck.de/start.html Welcome Day(s) Language Tandem Program Excursions and Events Offer by the Studentenwerk: https://studentenwerk.sh/en/international-students</p>

Courses taught in English for exchange students 2022/23

Last Update: 09.06.2022

Department of Applied Natural Sciences

Course ID	Course title	Study Programme	level	semester	ECTS	remark
	Audiological Acoustics	Audiological Acoustics	B	Fall	2	available upon request
	Anatomy and Physiology	Biomedical Engineering	M	Fall	4	
	Artificial Intelligence	Biomedical Engineering	M	Fall	4	elective*
	Biomechanics	Biomedical Engineering	M	Fall	2	
	Biophysics	Biomedical Engineering	M	Fall	2	
	Design Methodology	Biomedical Engineering	M	Fall	2	
	Design Methodology - Lab	Biomedical Engineering	M	Fall	2	
	Material Science	Biomedical Engineering	M	Fall	4	
	MatLab - Project	Biomedical Engineering	m	Fall	4	
	Medical Electronics	Biomedical Engineering	M	Fall	5	
	Medical Technology	Biomedical Engineering	M	Fall	6	
	Medical Technology - Lab	Biomedical Engineering	M	Fall	2	
	Microbiology and Hvgiene	Biomedical Engineering	M	Fall	4	
	Numerical Methods in Medicine	Biomedical Engineering	M	Fall	3	
	Photonics	Biomedical Engineering	M	Fall	4	
	Signal Processing	Biomedical Engineering	M	Fall	2	
	Signal Processing - Lab	Biomedical Engineering	M	Fall	2	
	Signals and Systems in Medical Imaging	Biomedical Engineering	M	Fall	3	
	Medical Robotics	Biomedical Engineering	M	Fall	4	elective*
	Biophysics Lab	Biomedical Engineering	M	Spring	2	elective*
	Clinical Application - Project/excursion	Biomedical Engineering	M	Spring	2	elective*
	Computer Aided Techniques in Design	Biomedical Engineering	M	Spring	5	elective*
	Health Technology Assessment	Biomedical Engineering	M	Spring	2	elective*
	Human Biochemistry - Lab	Biomedical Engineering	M	Spring	4	elective*
	Image Processing	Biomedical Engineering	M	Spring	3	
	Imaging	Biomedical Engineering	M	Spring	3	
	Implantable Hearing Devices	Biomedical Engineering	M	Spring	3	elective*
	Innovation Management and Marketing	Biomedical Engineering	M	Spring	2	elective*
	Medical Electronics - Project	Biomedical Engineering	M	Spring	2	
	Medical Technology - Selected Topics	Biomedical Engineering	M	Spring	4	elective*
	Numerical Methods - Lab	Biomedical Engineering	M	Spring	2	
	Photonics II	Biomedical Engineering	M	Spring	4	elective*
	Quality Management in Healthcare	Biomedical Engineering	M	Spring	2	elective*
	Regulatory Affairs (online)	Biomedical Engineering	M	Spring	2	
	Scientific Writing	Biomedical Engineering	M	Spring	2	
	Specialized Biomechanics	Biomedical Engineering	M	Spring	2	elective*
	Successful Negotiation and Communication	Biomedical Engineering	M	Spring	2	elective*
	Ecology	Environmental Engineering	B	Fall	2.5	elective*
	Environmental Chemistry	Environmental Engineering	B	Fall	5	
	Environmental Process Engineering	Environmental Engineering	B	Fall	7.5	
	Fundamentals of Environmental Biochemistry	Environmental Engineering	B	Fall	2.5	
	Toxicology	Environmental Engineering	B	Fall	2.5	elective*
	Waste Management	Environmental Engineering	B	Fall	2.5	
	Waste Water Processes	Environmental Engineering	B	Fall	5	
	Air Pollution Control	Environmental Engineering	B	Spring	5	
	Control Systems	Environmental Engineering	B	Spring	5	elective*
	Design Methodology	Environmental Engineering	B	Spring	2.5	

	Environmental Microbiology	Environmental Engineering	B	Spring	2.5	
	Innovation Management and Marketing	Environmental Engineering	B	Spring	2.5	elective*
	Renewable Energies	Environmental Engineering	B	Spring	5	
	Sensors	Environmental Engineering	B	Spring	2.5	elective*
	Water Chemistry and Water Analysis	Environmental Engineering	B	Spring	5	
	Energy Conversion and Power Plants	Environmental Engineering	B		2.5	elective*
	Energy Economics	Environmental Engineering	B		2.5	elective*
	Environmental Engineering Management	Environmental Engineering	B		2.5	elective*
	Hygiene	Environmental Engineering	B		2.5	elective*
	X-Ray Technology	Environmental Engineering	B		2.5	elective*

Department of Architecture and Civil Engineering

Course ID	Course title	Study Programme	level	semester	ECTS	remark
WEM1110	Higher Mathematics, Data Science	Water Engineering	M	Fall	3	
WEM1120	Research Methods	Water Engineering	M	Fall	3	
WEM1130	Water Regulation	Water Engineering	M	Fall	3	
WEM1140	Advanced Waste Water Treatment	Water Engineering	M	Fall	3	
WEM1150	Urban Water Protection	Water Engineering	M	Fall	6	
WEM1160	Hydraulic Engineering	Water Engineering	M	Fall	6	
WEM1170	Simulation and Modeling I	Water Engineering	M	Fall	6	
WEM1210	Geographic Information Systems	Water Engineering	M	Spring	6	
WEM1220	Applied Freshwater Ecology	Water Engineering	M	Spring	6	
WEM1230	Sustainable Urban Systems	Water Engineering	M	Spring	6	
WEM1240	Hydrological Engineering	Water Engineering	M	Spring	6	
WEM1250	Simulation and Modeling II	Water Engineering	M	Spring	6	

Department of Electrical Engineering and Computer Science

Course ID	Course title	Study Programme	level	semester	ECTS	remark
	Analog Electronics II	ISE Electrical Engineering	B	Fall	5	
	Control System Basics	ISE Electrical Engineering	B	Fall	5	
	Humanities I	ISE Electrical Engineering	B	Fall	5	
	Communication Engineering	ISE Electrical Engineering	B	Fall	5	
	Radio Frequencies	ISE Electrical Engineering	B	Fall	5	
	Signals and Systems	ISE Electrical Engineering	B	Fall	5	
	German language and culture I	ISE Electrical Engineering	B	Fall	5	
	Computer Aided Design	ISE Electrical Engineering	B	Spring	5	
	Digital Control Systems	ISE Electrical Engineering	B	Spring	5	
	Humanities II	ISE Electrical Engineering	B	Spring	5	
	Microwaves	ISE Electrical Engineering	B	Spring	5	
	Communication Networks	ISE Electrical Engineering	B	Spring	5	
	Renewable Energy	ISE Electrical Engineering	B	Spring	5	
	German language and culture II	ISE Electrical Engineering	B	Spring	5	prerequisite: GLC I
	Information Systems	Information Technology	B	Fall	5	
	Principles of Compilers	Information Technology	B	Fall	5	
	Software Engineering II	Information Technology	B	Spring	5	
	Computer Networks	Information Technology	B	Spring	5	
	Distributed Systems	Information Technology	B	Spring	5	
	Digital Signal Processing	Information Technology	B		5	elective*, offered on demand -> contact Department EE
	Artificial Intelligent Systems	Information Technology	B		5	elective*, offered on demand -> contact Department EE
	Automation Systems - Industrial Robots	Information Technology	B		5	elective*, offered on demand -> contact Department EE
	Automation Systems - PLC-Systems	Information Technology	B		5	elective*, offered on demand -> contact Department EE
	Project Management	Information Technology	B		5	elective*, offered on demand -> contact Department EE
	Human Machine Interaction	Information Technology	B		5	elective*, offered on demand -> contact Department EE
	Interactive Virtual Worlds	Information Technology	B		5	elective*, offered on demand -> contact Department EE
	Special Topic of Automation Systems	Information Technology	B		5	elective*, offered on demand -> contact Department EE
	Special Topic of Computer Science	Information Technology	B		5	elective*, offered on demand -> contact Department EE
	Special Topic of Electrical Engineering	Information Technology	B		5	elective*, offered on demand -> contact Department EE
	Internet Programming	Information Technology	B		5	elective*, offered on demand -> contact Department EE
	Network Security	Information Technology	B		5	elective*, offered on demand -> contact Department EE
	Business Process Management	Applied Information Technology	M	Fall	5	
	Scientific Project	Applied Information Technology	M	Fall	5	
	Real-Time Systems	Applied Information Technology / Computer Science/SEDS	M	Fall	5	elective*
	Supply Chain Management	Applied Information Technology	M	Fall	5	elective*
	Wireless Network for Cyber Physical Systems	Applied Information Technology	M	Fall	5	elective*
	Digital Processing of Stochastic Signals	Applied Information Technology	M	Fall	5	elective*
	Human-Computer Interfaces	Applied Information Technology / Computer Science/SEDS	M	Fall	5	elective*
	Process Optimization	Applied Information Technology	M	Fall	5	elective*
	Process Integration	Applied Information Technology	M	Fall	5	elective*, not offered at the moment -> ask on demand
	Secure Networked Control Systems	Applied Information Technology / Computer Science/SEDS	M	Fall	5	elective*, not offered at the moment -> ask on demand
	Mobile Applications	Applied Information Technology / Computer Science/SEDS	M	Fall	5	elective*, not offered at the moment -> ask on demand
	Secure Programming	Applied Information Technology / Computer Science/SEDS	M	Fall	5	elective*, not offered at the moment -> ask on demand
	Hardware-based IT-Security	Applied Information Technology / Computer Science/SEDS	M	Fall	5	elective*, not offered at the moment -> ask on demand
	Scientific Project I	Computer Science/Software Engineering for Distributed Systems	M	Spring	5	
	Cloud-native Architectures	Computer Science/Software Engineering for Distributed Systems	M	Spring	5	offered in German/English -> ask lecturer on demand
	Special Topics in Distributed Systems I	Computer Science/Software Engineering for Distributed Systems	M	Spring	5	elective*
	Distributed Database and Information Systems	Computer Science/Software Engineering for Distributed Systems	M	Fall	5	offered in German/English -> ask lecturer on demand
	Cloud-native Programming	Computer Science/Software Engineering for Distributed Systems	M	Fall	5	offered in German/English -> ask lecturer on demand

Scientific Project II	Computer Science/Software Engineering for Distributed Systems	M	Fall	5	
Seminar Distributed Systems	Computer Science/Software Engineering for Distributed Systems	M	Fall	5	
Special Topics in Distributed Systems II	Computer Science/Software Engineering for Distributed Systems	M	Fall	5	elective*

Department of Mechanical Engineering and Business Administration

Course ID	Course title	Study Programme	level	semester	ECTS	remark
N3B2400	Selected Topics in Information Technology	International Business	B	Fall	5	
N3B2440	Management in the Global Economy	International Business	B	Fall	5	= International Management
N3B2430	International Accounting and Law	International Business	B	Fall	5	
N3B2410	Entrepreneurship	International Business	B	Fall	5	
N3B2420	Advanced English Communication	International Business	B	Fall	3	
N3B2500	International Markets	International Business	B	Fall	5	
N3B2510	Corporate Finance	International Business	B	Fall	5	
N3B2520	Marketing in the Global Economy	International Business	B	Fall	5	
N3B2530	Supply Chain Management	International Business	B	Fall	2	
N3B2490	Academic Writing and Research Seminar	International Business	B	Fall	7	
N3B2450	Methods of Market Research	International Business	B	Spring	5	
N3B2470	Management of Innovation	International Business	B	Spring	2	
N3B2480	International Economic Policies	International Business	B	Spring	5	
MB1810	Automatic Control Systems	ISM Mechanical Engineering	B	Fall	4	
MB1840	Fluid Mechanics	ISM Mechanical Engineering	B	Fall	4	
MB1830	Instrumentation/Measurement	ISM Mechanical Engineering	B	Fall	4	
MB1940	Principles of Thermodynamics I	ISM Mechanical Engineering	B	Fall	4	
MB1930	Intermediate Mechanics of Materials	ISM Mechanical Engineering	B	Fall	4	
MB1910	Design of Machine Components	ISM Mechanical Engineering	B	Fall	4	
MB1950	Project Management	ISM Mechanical Engineering	B	Fall	2	
MB1820	Humanities I	ISM Mechanical Engineering	B	Fall	4	
MB1970	Principles of Thermodynamics II	ISM Mechanical Engineering	B	Spring	2	
MB1980	Product Development/ Engineering Design	ISM Mechanical Engineering	B	Spring	4	
MB1850	Heat Transfer	ISM Mechanical Engineering	B	Spring	4	
MB1870	Modelling and Numerical Analysis	ISM Mechanical Engineering	B	Spring	4	
MB1880	Vibration Control	ISM Mechanical Engineering	B	Spring	4	
MB1860	Humanities II	ISM Mechanical Engineering	B	Spring	4	
MB2120	Selected Topics in Social Science	ISM Mechanical Engineering	B	Spring	3	
MB1450	Professional Behaviour	ISM Mechanical Engineering	B	Spring	3	
WB2010	International Management	ISW Engineering and Business Management	B	Fall	5	= Mgmt in the Global Economy
WB2510	Project Management with Business Project	ISW Engineering and Business Management	B	Fall	5	
WB2540	Operations Management	ISW Engineering and Business Management	B	Fall	5	
WB2550	Planning of Technological Investments and Simulations	ISW Engineering and Business Management	B	Fall	5	
WB2520	International Business Finance	ISW Engineering and Business Management	B	Spring	5	
WB2530	Quantitative Methods in Business	ISW Engineering and Business Management	B	Spring	5	
WB2560	Integrated Systems (SAP)	ISW Engineering and Business Management	B	Spring	5	
WB2570	Materials Handling	ISW Engineering and Business Management	B	Spring	5	
WB2630	Professional Behaviour	ISW Engineering and Business Management	B	Spring	5	
MM1520	Seminar 1: Current Research Topics	Mechanical Engineering	M	Fall	5	only for students who write the Master thesis at THL
MM1220	Product Development in Production	Mechanical Engineering	M	Fall	5	please check pre-requisites
MM1310	Simulation and Control	Mechanical Engineering	M	Fall	5	elective*; **
MM1320	Composite Materials	Mechanical Engineering	M	Fall	5	elective*
MM1340	Toolbox for Fluid Mechanical Design	Mechanical Engineering	M	Fall	5	elective*, please check pre-requisites
MM1370	Polymer Science	Mechanical Engineering	M	Fall	5	elective*, please check pre-requisites
MM1380	Prototyping & Virtual Reality	Mechanical Engineering	M	Fall	5	elective*
MM1390	Surface Engineering and Tribology	Mechanical Engineering	M	Fall	5	elective*, please check pre-requisites
MM1350	Selected Topics in Mechatronics	Mechanical Engineering	M	Fall	5	elective*, please check pre-requisites
MM1315	Biomechanics & Biophysics	Mechanical Engineering	M	Fall	5	elective*
MM1325	Medical Technology	Mechanical Engineering	M	Fall	5	elective*

MM1335	Mechanics of Solids	Mechanical Engineering	M	Fall	5	elective*
MM1410	Ethics	Mechanical Engineering	M	Fall	5	elective*
MM1420	Product & Business Plan	Mechanical Engineering	M	Fall	5	elective*
MM1395	Data Science for Predictive Maintenance	Mechanical Engineering	M	Fall	5	elective*
MM1385	Mobile Mechatronic Systems	Mechanical Engineering	M	Fall	5	elective*
MM1130	Material Science	Mechanical Engineering	M	Spring	5	please check pre-requisites, **
MM1210	Advanced Product Development	Mechanical Engineering	M	Spring	5	please check pre-requisites
MM1620	Management & Leadership	Mechanical Engineering	M	Spring	5	
MM1230	Computer Aided Techniques in Design	Mechanical Engineering	M	Spring	5	please check pre-requisites, **
MM1330	Advanced Material Testing	Mechanical Engineering	M	Spring	5	please check pre-requisites, **
MM1110	Selected Topics of Finite Element Methods	Mechanical Engineering	M	Spring	5	please check pre-requisites
MM1120	Selected Topics in Engineering Mathematics	Mechanical Engineering	M	Spring/ Fall	5	please check pre-requisites
* please check which courses will be finally offered, places are limited						
** courses include a lab, places are limited						

Language Center

Course title	Level(s)	ECTS
Technical English for Civil Engineering & Achitecture	B1/B2	5
Technical English I	B1/B2	5
Technical English II	B2/C1	5
Business English I	B2	5
Business English II	B2/C1	5
English for International Certificates	B2/C1	n/a
Scientific Writing in English	B2/C1	5
German	A 1.1 - B2.2	5
DaF Wissenschaftliches Arbeiten	B2/C1	n/a

We have also provided information on our homepage at <https://www.th-luebeck.de/en/studies/study-offer/international-studies/#tab-1>

Students can choose courses also from other degree programs and faculties but should take the majority of courses from one degree program. Students should be aware that choosing courses from other programs may cause overlaps in the teaching schedule.

(Info received by email 23/02/2023)