

Configuration of VPN in Windows (SSL)

Author: IT Services

Date: 26/08/2021

Objective: Configuration of VPN (SSL) network in Windows.

Index

Introduction.....	3
Configuration.....	4

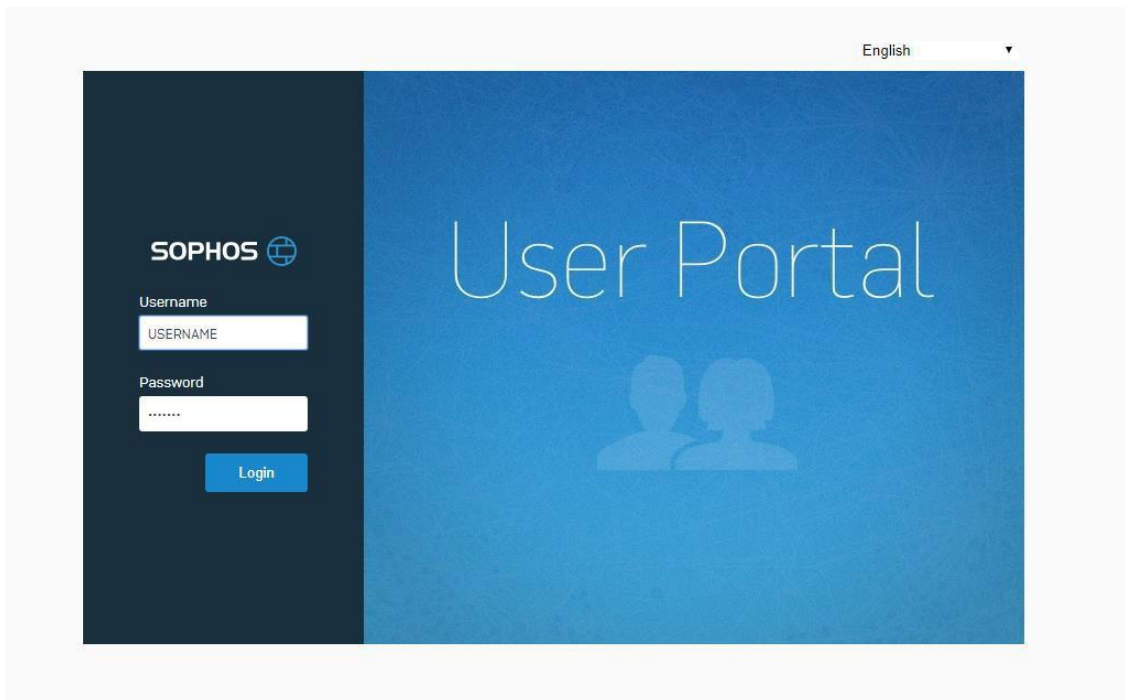


Introduction

This document has the main goal to explain the process of configuring the access to VPN (SSL) wireless network on Windows environment.

2 Configuration

1. Access to: <https://193.136.119.130:8443/> , and login with your credentials (same as all institutional portals).



2. Select **"SSL VPN"** and then choose **"Download Client and Configuration for Windows"**.

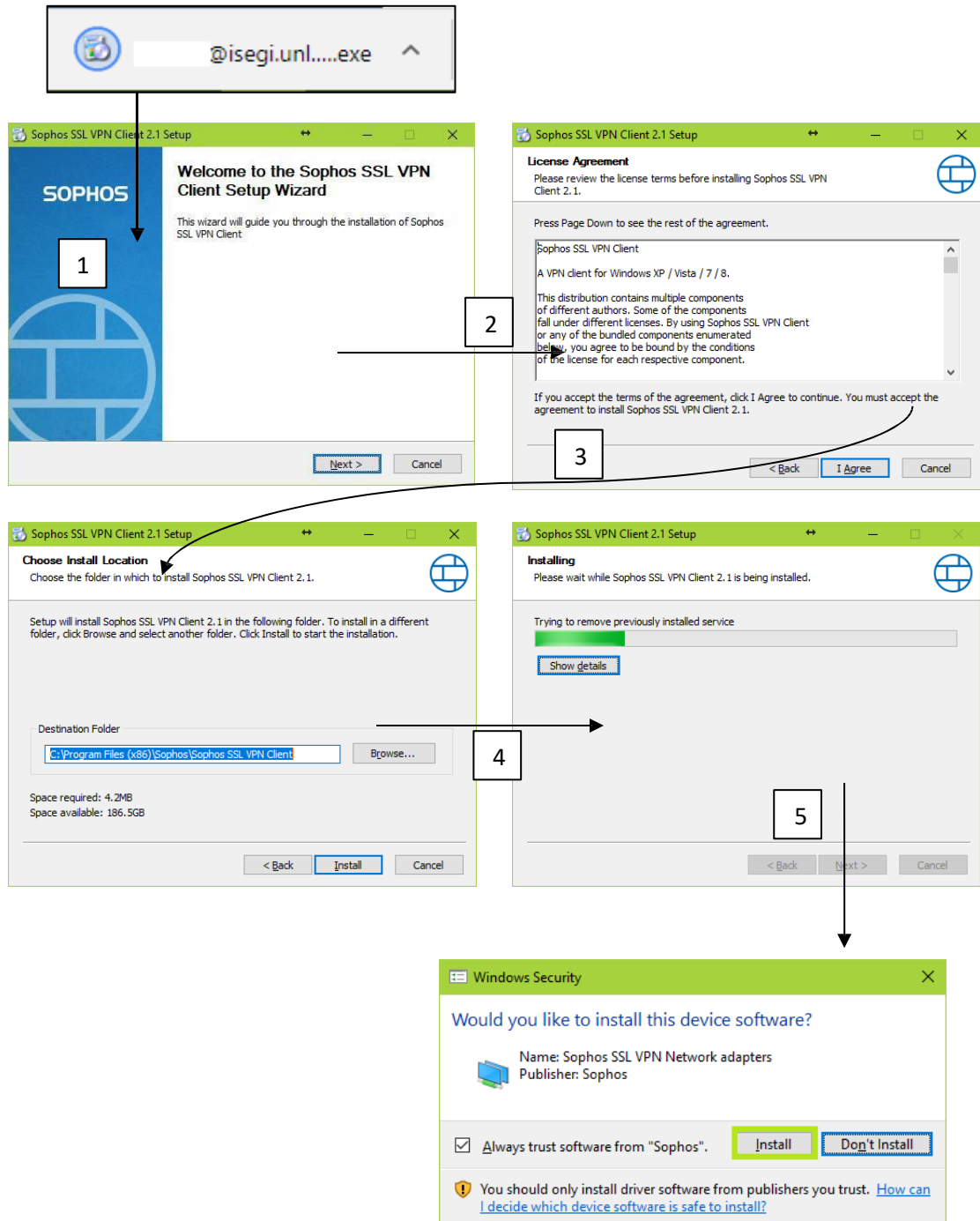
SOPHOS

- Home
- Personal
- Download Client
- SSL VPN**
- Internet Usage
- SMTP Quarantine
- Logout

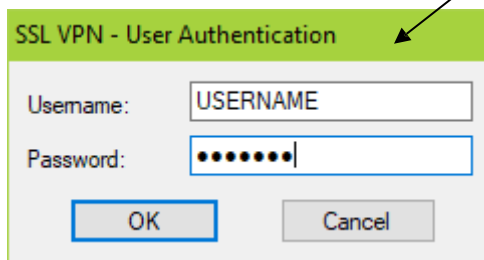
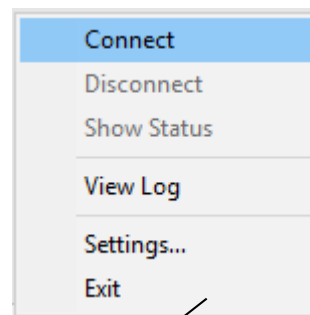
SSL VPN Client

- Download Client and Configuration for Windows**
- Download Configuration for Windows
- Download Configuration for Other OSs
- Download Configuration for Android/iOS

3. **Install** the client and **accept** the certificate.



4. Right click on the **traffic light icon**, select "**Connect**" and then put your **username** and **password**, click "**Ok**".



5. It will show you a message on the **windows taskbar** informing that your VPN is ready (**put the mouse over the traffic light**). You can also check if VPN connected successfully just by checking if the light is **green**.



For other information, please contact IT Services: si@novaims.unl.pt

