

# Configuration of Access to Eduroam Wireless Network

---

**Author:** IT Services

**Date:** 06/09/2016

**Objective:** Describe the procedure to configure de access to EDUROAM Wireless Network

**Prerequisites:** Windows 10 Operation System

# Index

1	Introduction .....	3
2	Configuration .....	4

# 1 Introduction

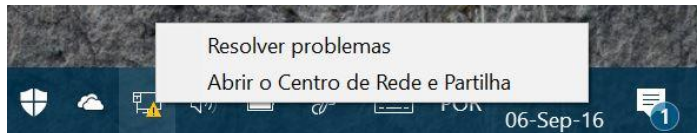
---

This document aims to explain the configuration process to access Eduroam wireless network on Windows 10.

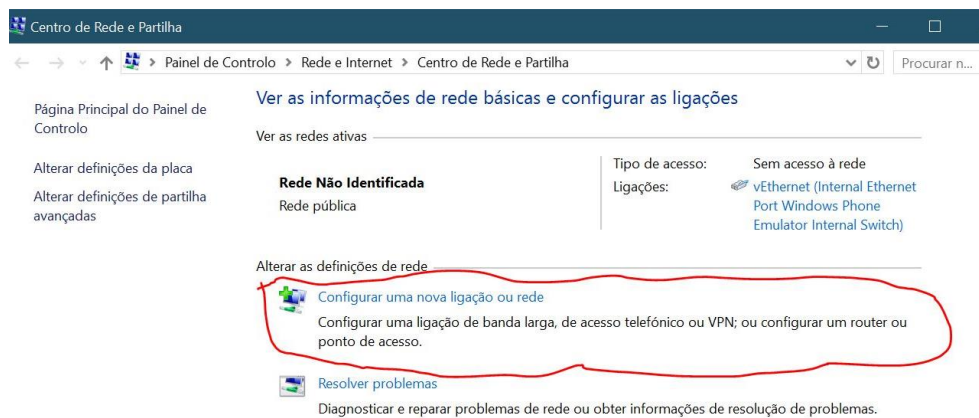
## 2 Configuration

To configure the access to Eduroam Wi-fi follow the steps below:

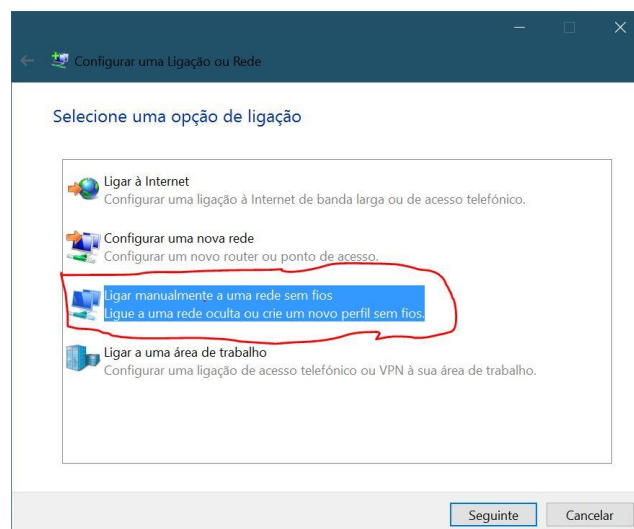
1. Click network icon of toolbar to access **Network and Sharing Center**:



2. Click **Setup a New Connection Network**:



3. Click **Manually connect to a wireless network**:



4. Put in the properties: *Network name: eduroam; Security type: WPA2- Enterprise; Encryption type: AES.*

The screenshot shows a Windows window titled "Ligar manualmente a uma rede sem fios". The window contains the following fields and options:

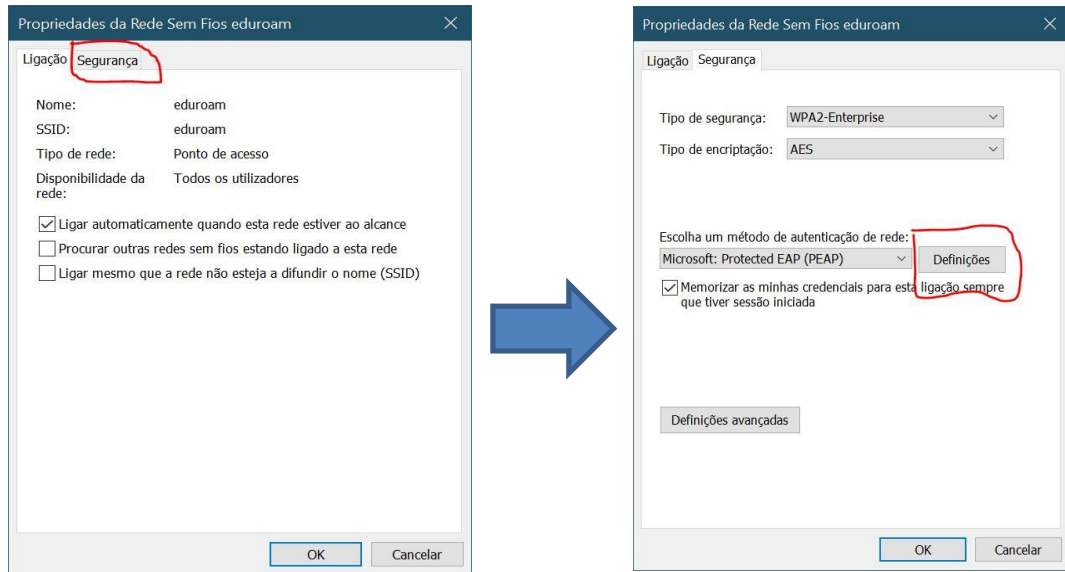
- Nome de rede: eduroam
- Tipo de segurança: WPA2-Enterprise
- Tipo de encriptação: AES
- Chave de segurança: (empty field)  Ocultar caracteres
- Iniciar automaticamente esta ligação (highlighted with a red circle)
- Ligar mesmo que a rede não esteja a difundir
- Aviso: Se selecionar esta opção, a privacidade do computador poderá ficar em risco.
- Buttons: Seguinte, Cancelar

5. Click **Change Connection Settings**

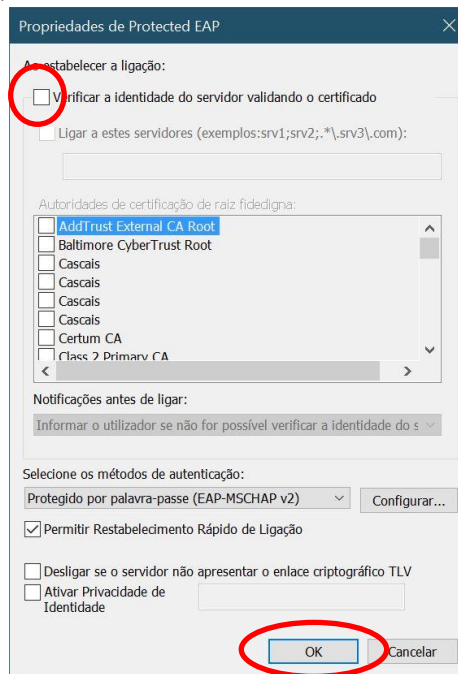
The screenshot shows the same Windows window after successful setup. The title bar remains "Ligar manualmente a uma rede sem fios". The main content area displays:

- eduroam adicionado com êxito
- Alterar definições de ligação  
Abrir as propriedades da ligação de modo a que eu possa alterar as definições. (highlighted with a red circle)
- Button: Fechar

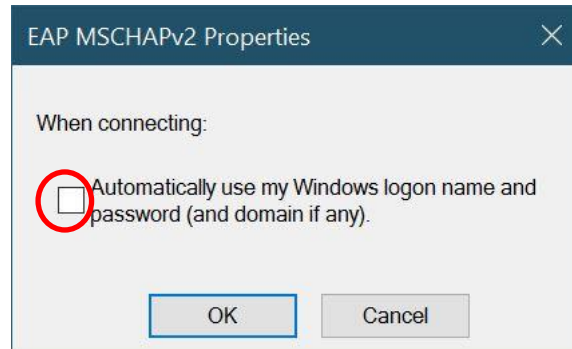
6. In tab **Security**, click **Settings**



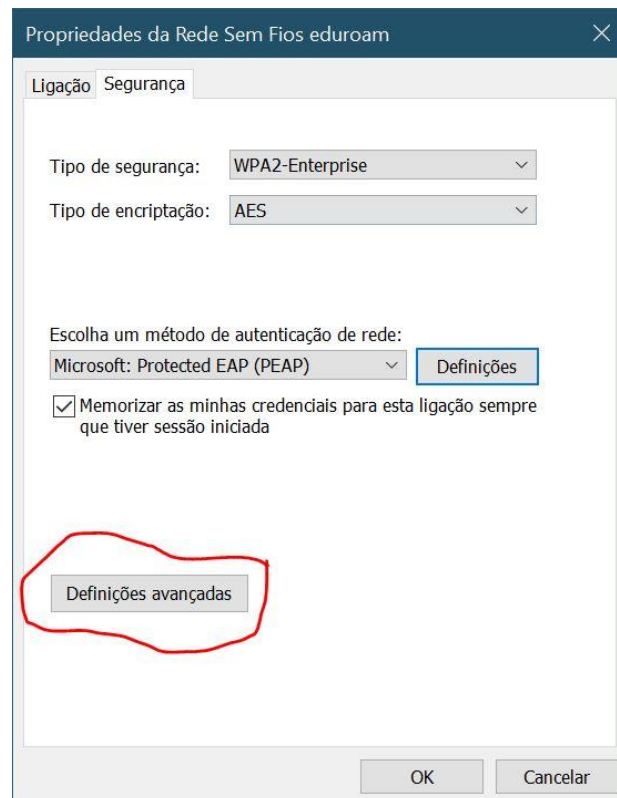
7. Disable the field **Validate server certificate** and select **Configure** (just like the picture):



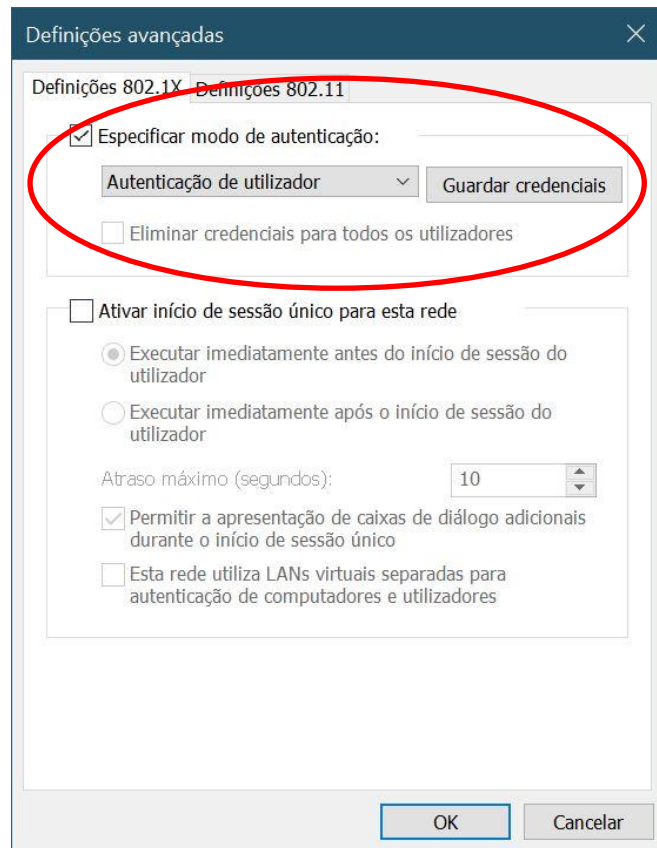
8. Disable the field **Automatically use my Windows logon name and password** and click **OK**.



9. In tab **Security** select **Advanced Settings**:



10. In Tab **802.1x Settings**, select the field **Specify authentication mode** and choose **User authentication**.



11. When connected put in your credentials. Example: [user@novaims.unl.pt](mailto:user@novaims.unl.pt) or [user@isegi.unl.pt](mailto:user@isegi.unl.pt) and password.

