

# Configuration of VPN in Windows (SSL)

---

**Author:** IT Services

**Date:** 20/07/2017

**Objective:** Configuration of VPN (SSL) network in Windows.

## **Index**

|                    |   |
|--------------------|---|
| Introduction.....  | 3 |
| Configuration..... | 4 |



## Introduction

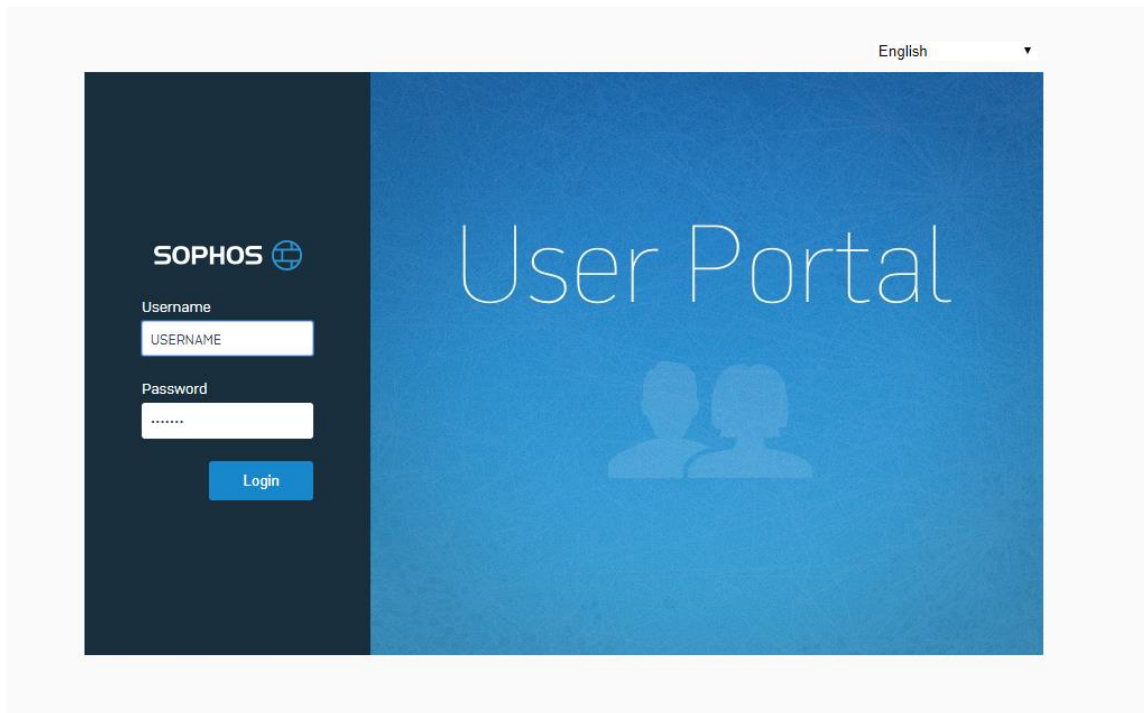
---

This document has the main goal to explain the process of configuring the access to VPN (SSL) wireless network on Windows environment.

## 2 Configuration

---

1. Access to: <https://193.137.124.194:8443/> , and login with your credentials (same as all institutional portals).

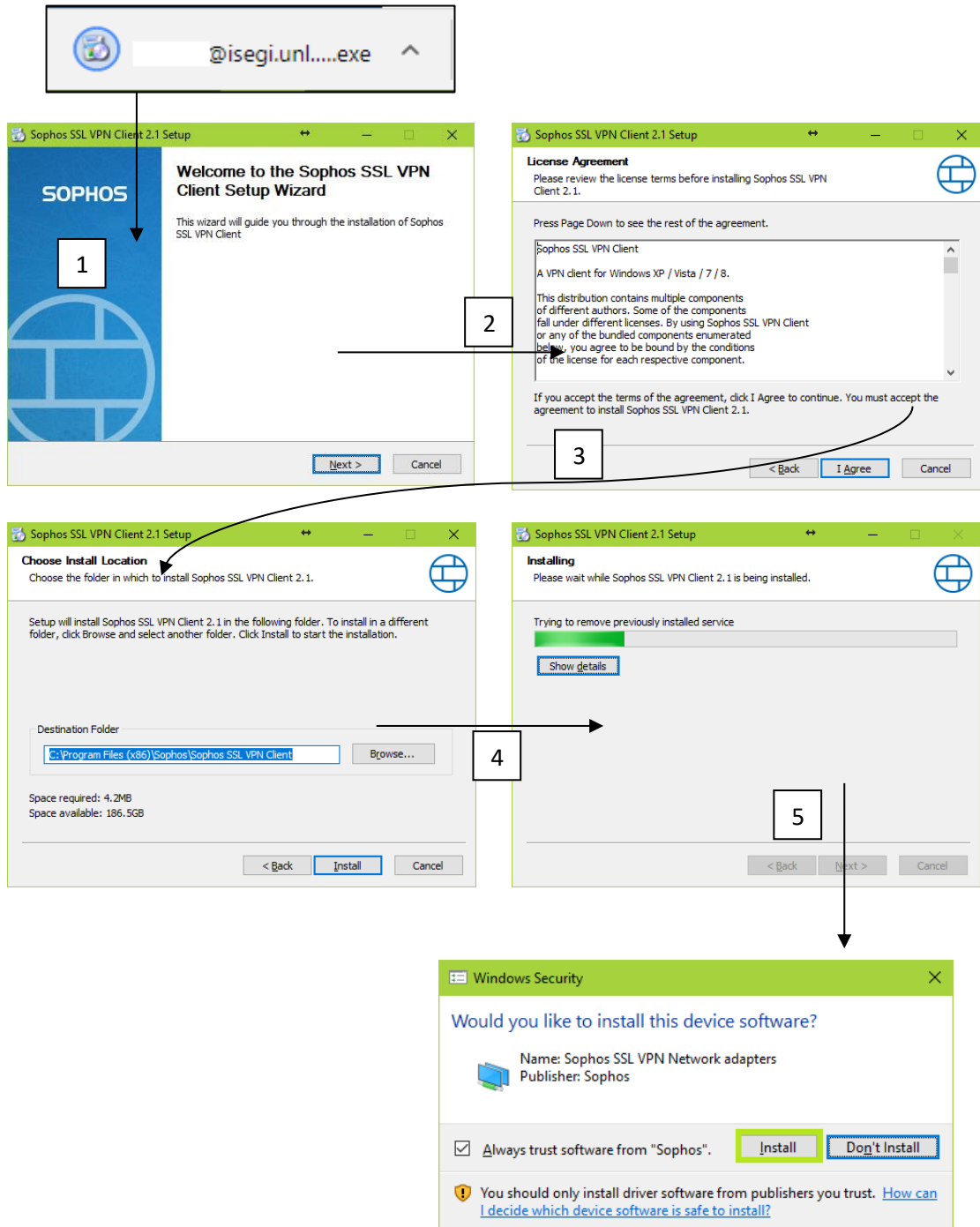


2. Select **"SSL VPN"** and then choose **"Download Client and Configuration for Windows"**.

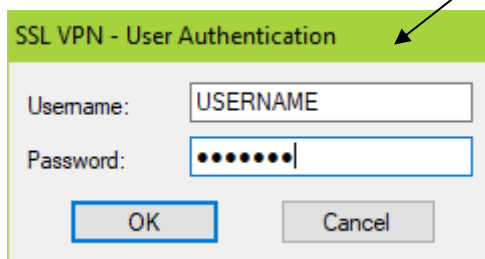
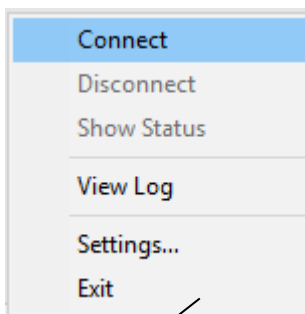
The screenshot displays the Sophos web interface for the SSL VPN Client. On the left, a dark blue sidebar contains the Sophos logo and a list of navigation options: Home, Personal, Download Client, **SSL VPN** (highlighted with a red border), Internet Usage, SMTP Quarantine, and Logout. The main content area is titled 'SSL VPN Client' and features a list of four download links, each with a download icon. The first link, 'Download Client and Configuration for Windows', is highlighted with a red border. The other links are 'Download Configuration for Windows', 'Download Configuration for Other OSs', and 'Download Configuration for Android/iOS'.



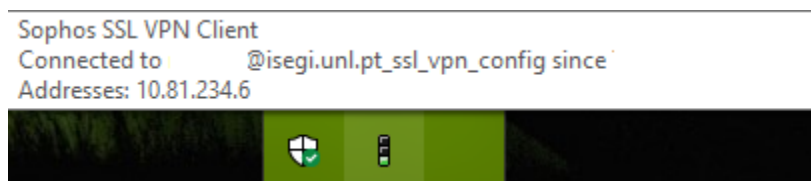
3. **Install** the client and **accept** the certificate.



4. Right click on the **traffic light icon**, select "**Connect**" and then put your **username** and **password**, click "**Ok**".



5. It will show you a message on the **windows taskbar** informing that your VPN is ready (**put the mouse over the traffic light**). You can also check if VPN connected successfully just by checking if the light is **green**.



For other information, please contact IT Services: [si@novaims.unl.pt](mailto:si@novaims.unl.pt)

